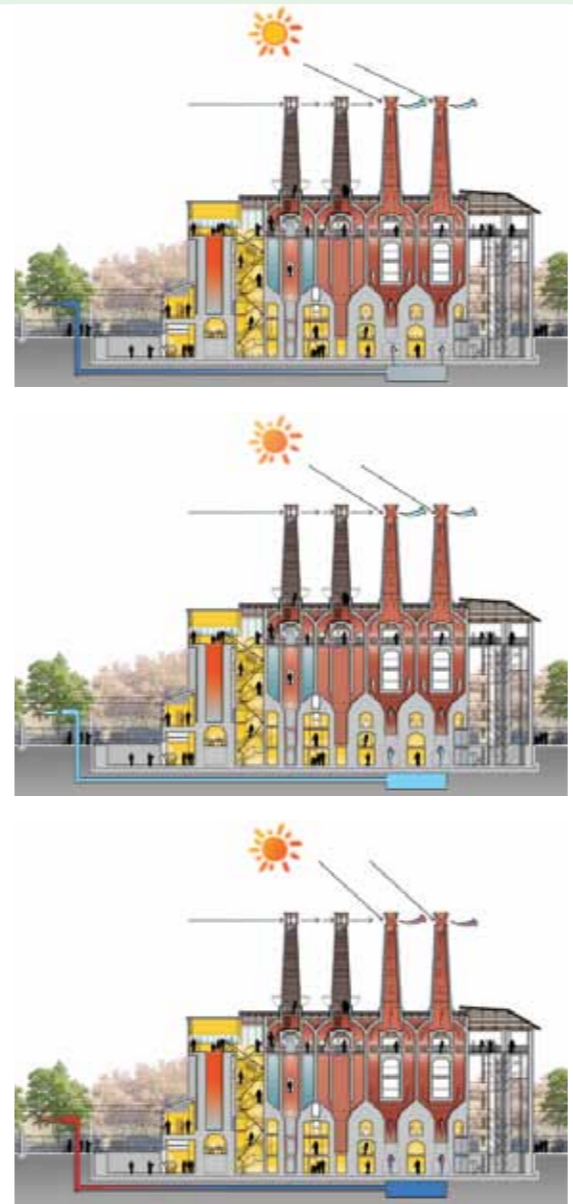
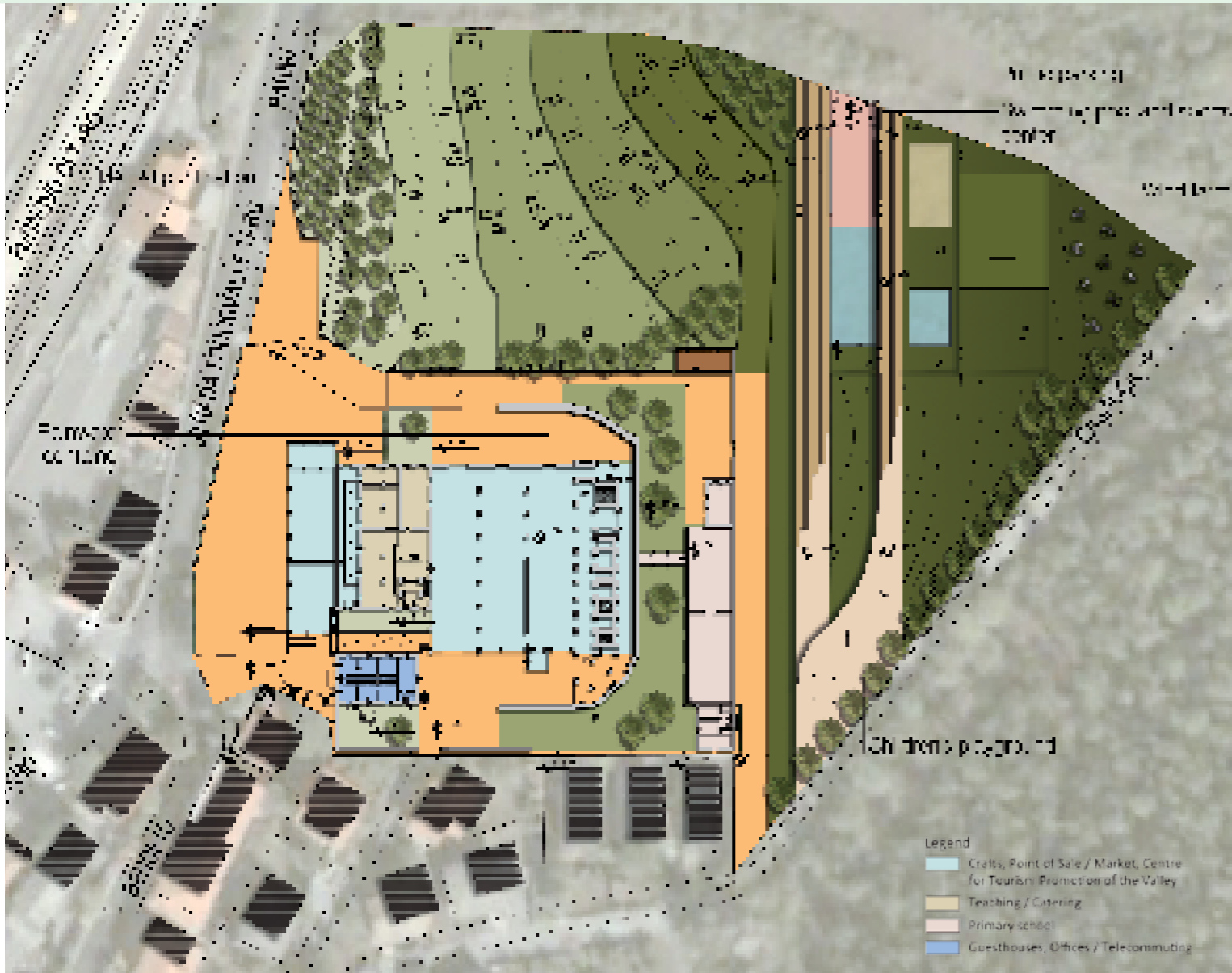


RENOVATION OF FORMER MARCHINO CEMENT FACTORY



LOCATION: Ghiare di Berceto (PR)
CLIENTS: City of Berceto
ARCHITECTONICAL DESIGNERS: Francesco Fulvi, Simona Bernardoni, Roberto Bruni, Marco Mosconi, Silvia Fecci
TOTAL AREA: 12.000 sqm
DATES AND PLANNING: SAIE Selection Competition 2012 - Preliminary Proposal

The requalification project of the former Marchino Cement Factory has the intent to preserve the historical and archaeological memory of the complex applying appropriate standards of environmental sustainability and energy efficiency. The project aims to convert and recover all volumes both public and private, with a new parking integrated into the mountains, partly covered with photovoltaic panels and climbing plants. In the eastern area the design includes a sports centre and a school. The project of mechanical systems will make the building self-sufficient in energy requirements, by producing electricity through wind and solar power plants.

