

ARES COMPETITION

COMMITTENTE: Ares Competition

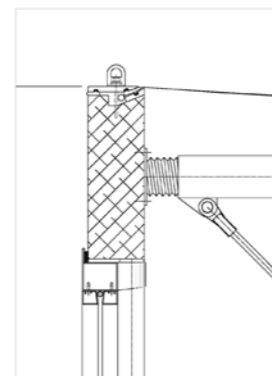
PROGETTISTI ARCHITETTONICI : ing. Francesco Fulvi arch.
 Hendrik Hegemann, arch. Kleopatra Malama

TEMPISTICA: Concorso. 2007

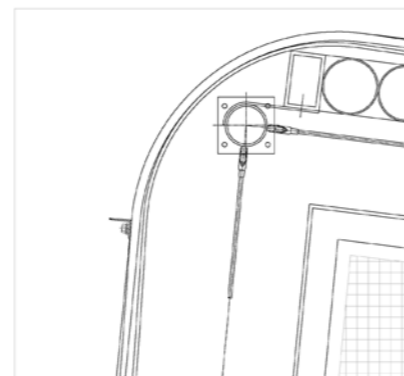
Progetto di residenza temporanea per zone sottoposte a calamità naturali o a conflitti.



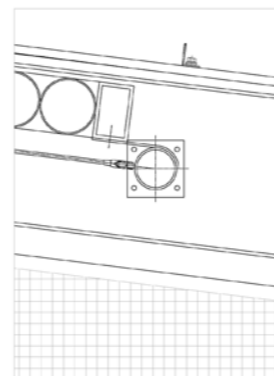
CONSTRUCTION ELEMENTS AND DETAILS



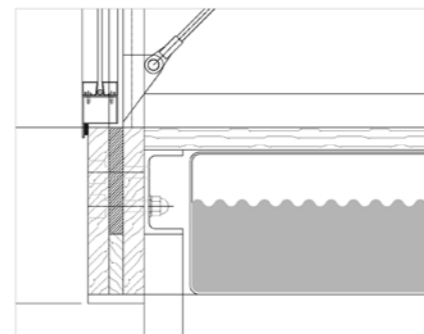
DETAIL SCALE 1/5



DETAIL SOLAR PANEL SCALE 1/5

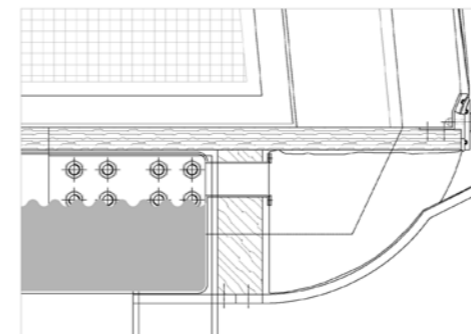


DETAIL STORE SCALE 1/5



DETAIL FRAME FIXATION, SCALE 1/5

The project HLP 2010 offers the absolute autonomy of every single shell unit for the first period of time. It works without a complete infrastructure. On every side of the floor element there is a gutter to collect raining water which is running down the outer shell of the shelter. To guarantee electrical power and hot water the units are equipped on the roof with a solar panel and a photovoltaic element.



DETAIL WATER COLLECTION, SCALE 1/5

